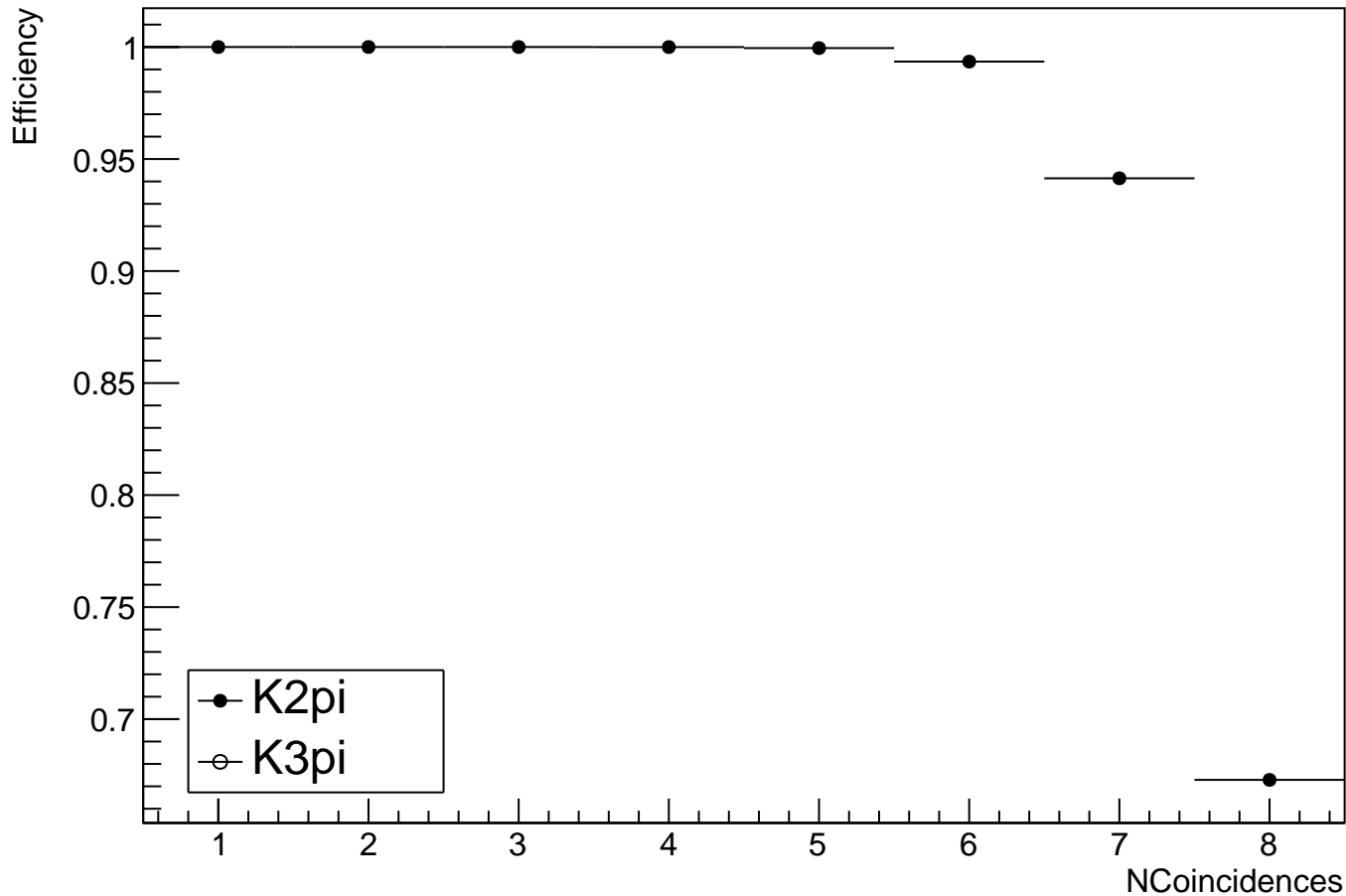
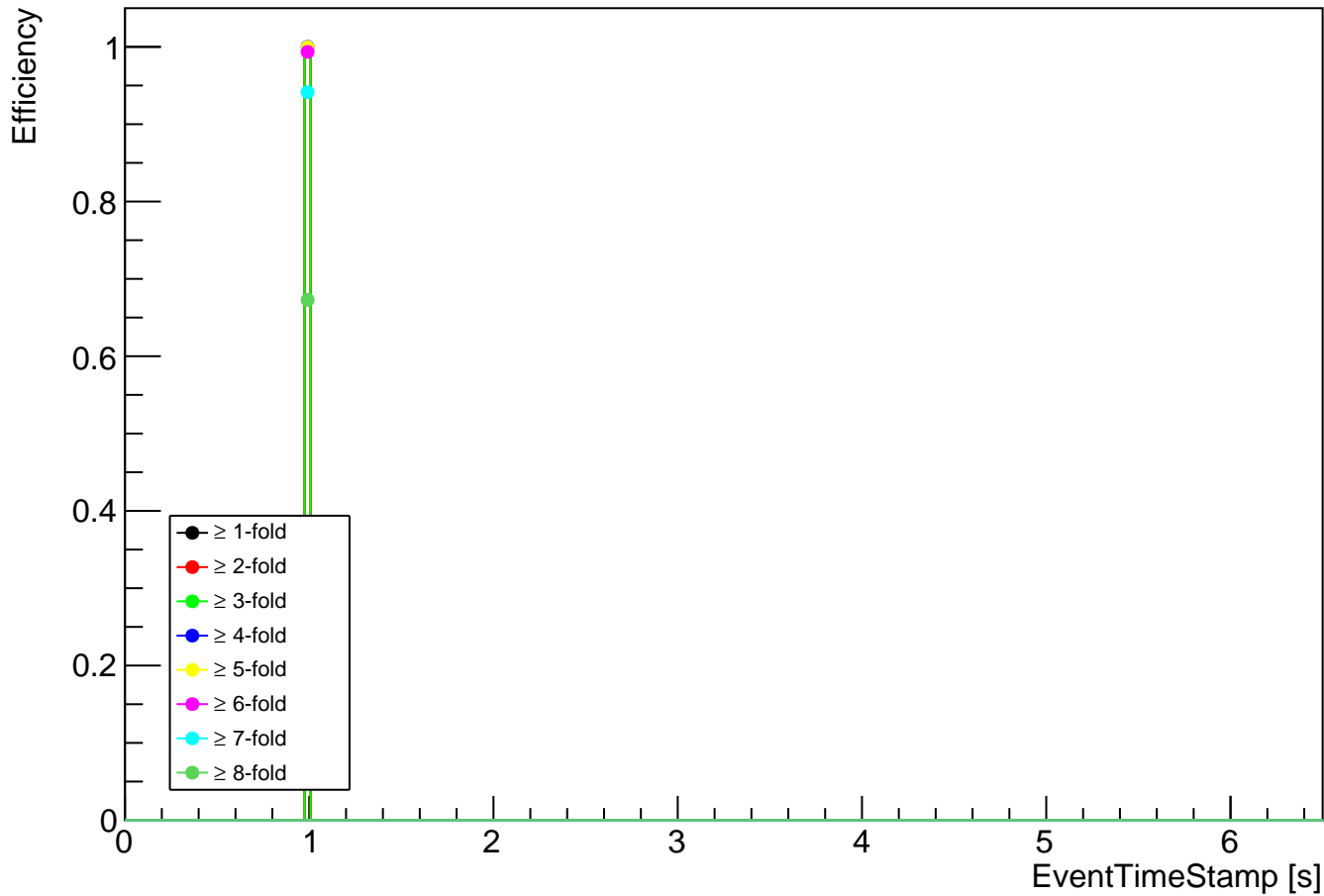


Cedar Efficiency vs NCoincidences for run 8094

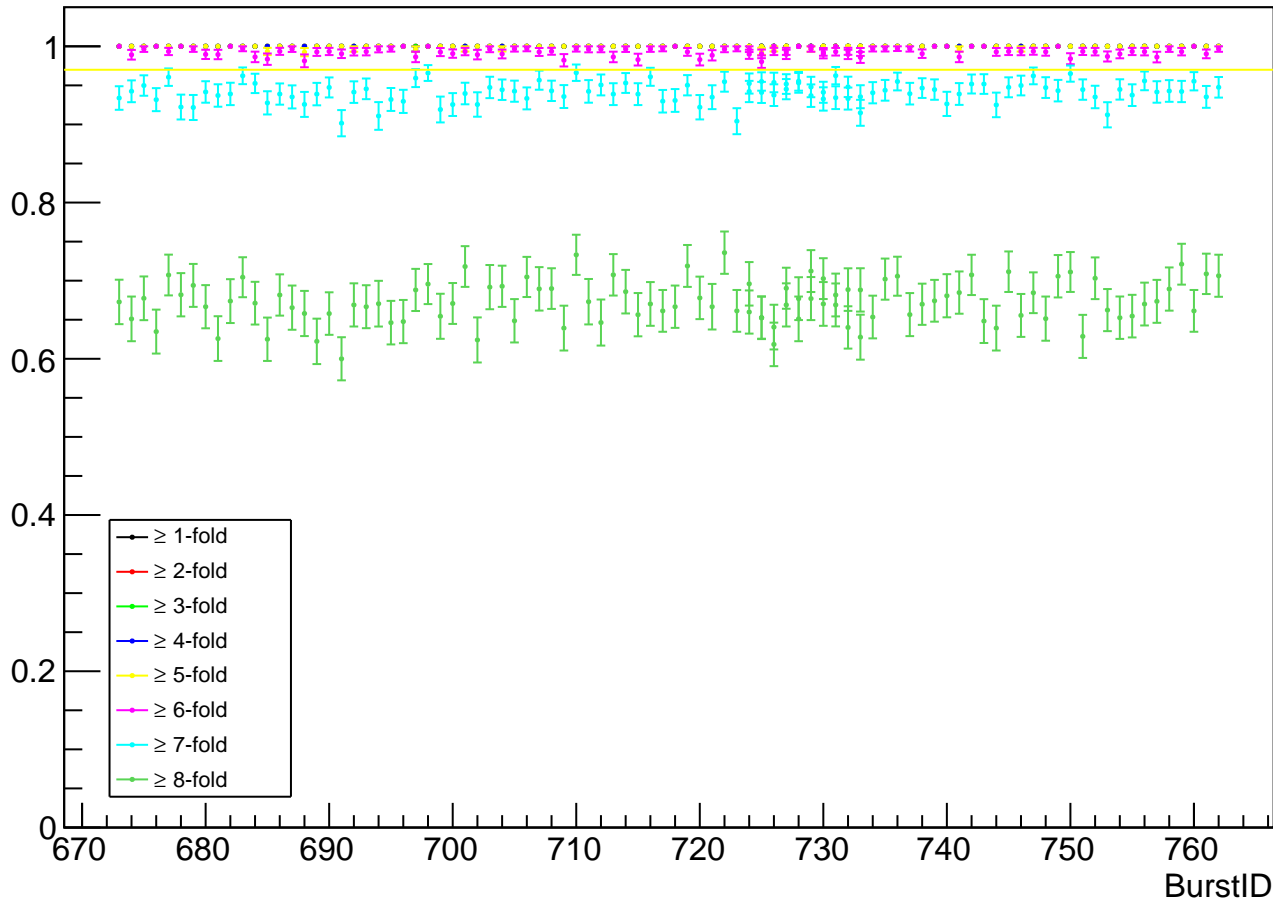


Cedar Efficiency vs EventTimeStamp for run 8094



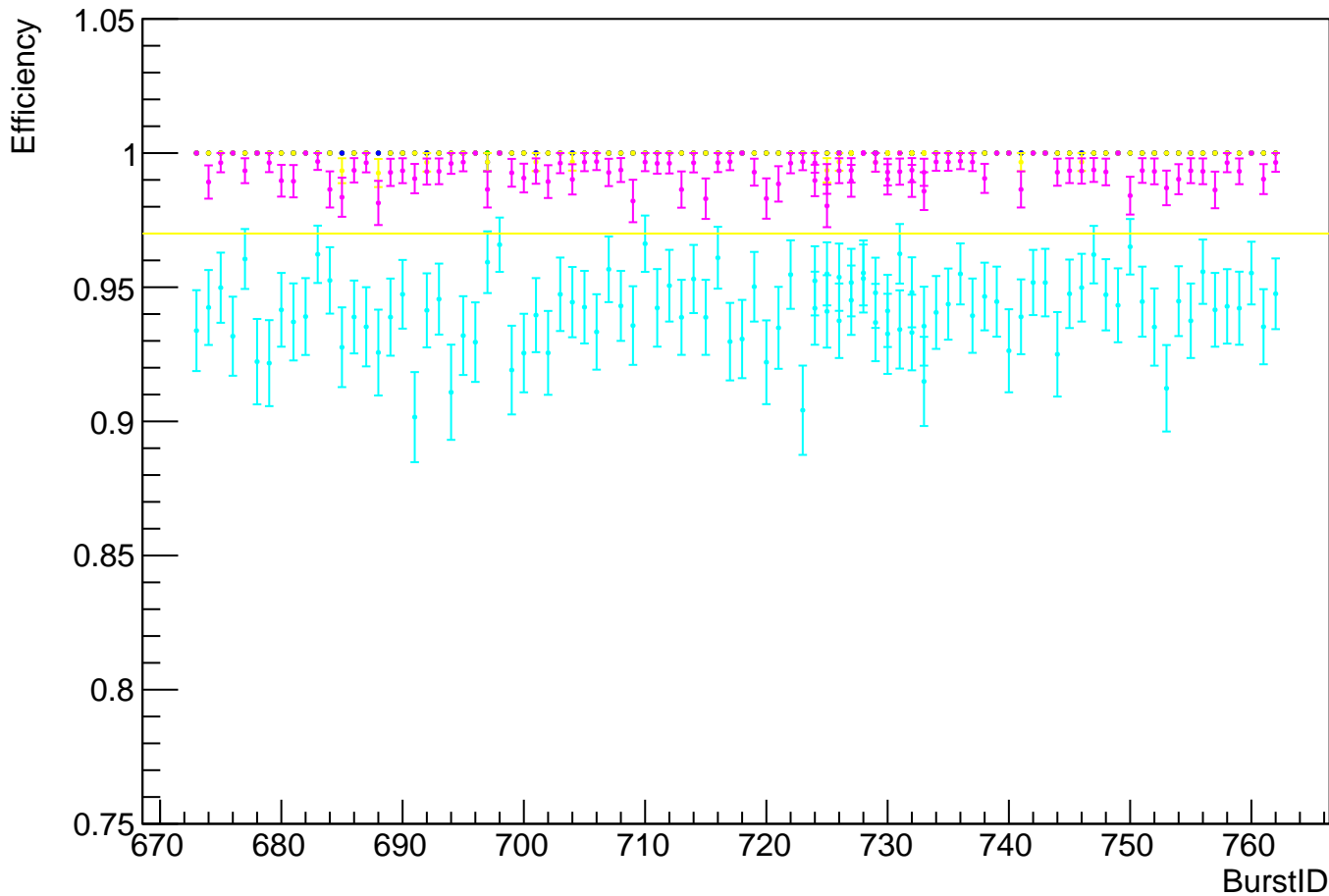
Cedar Efficiency (K2pi selection) vs BurstID for run 8094

Efficiency

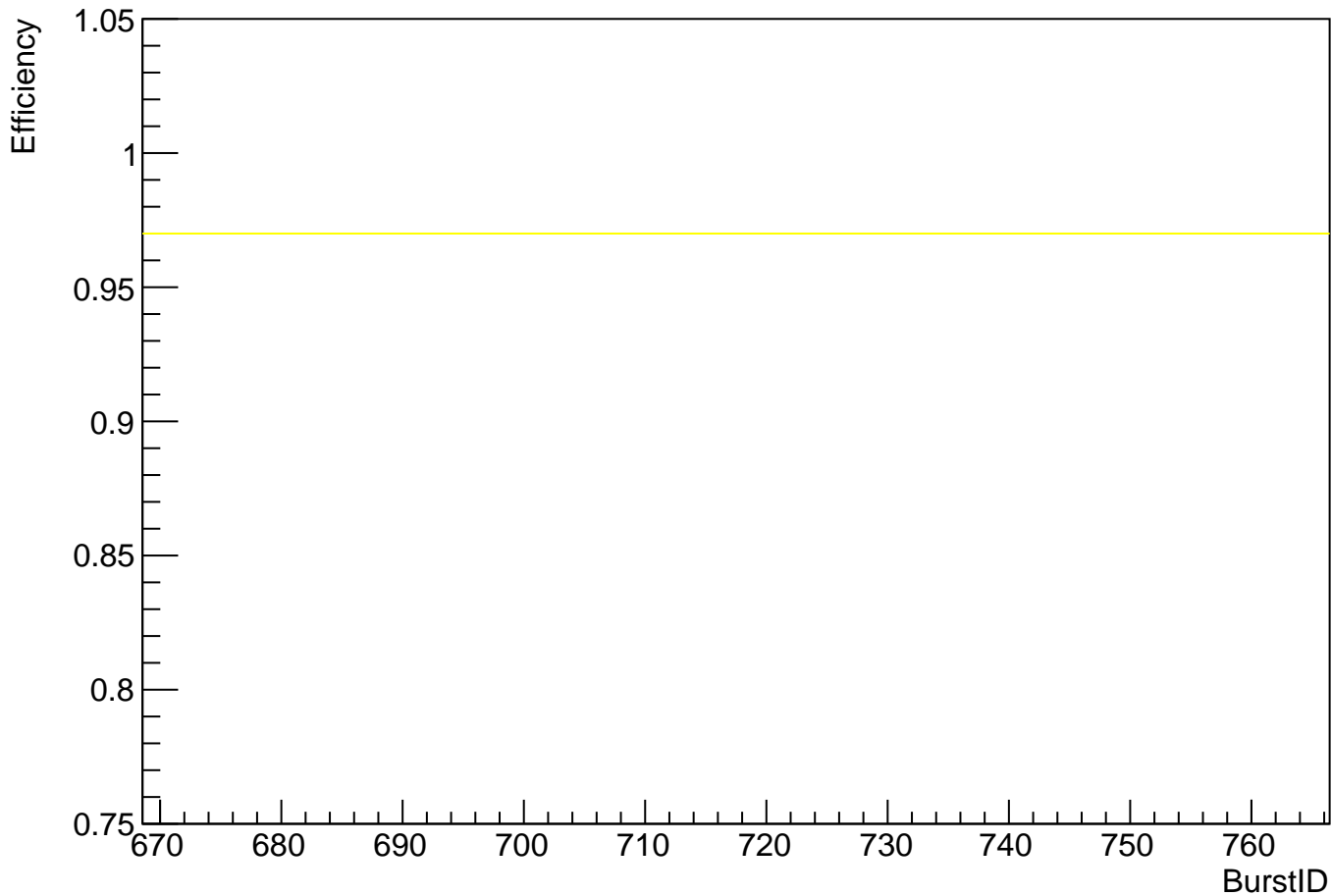


BurstID

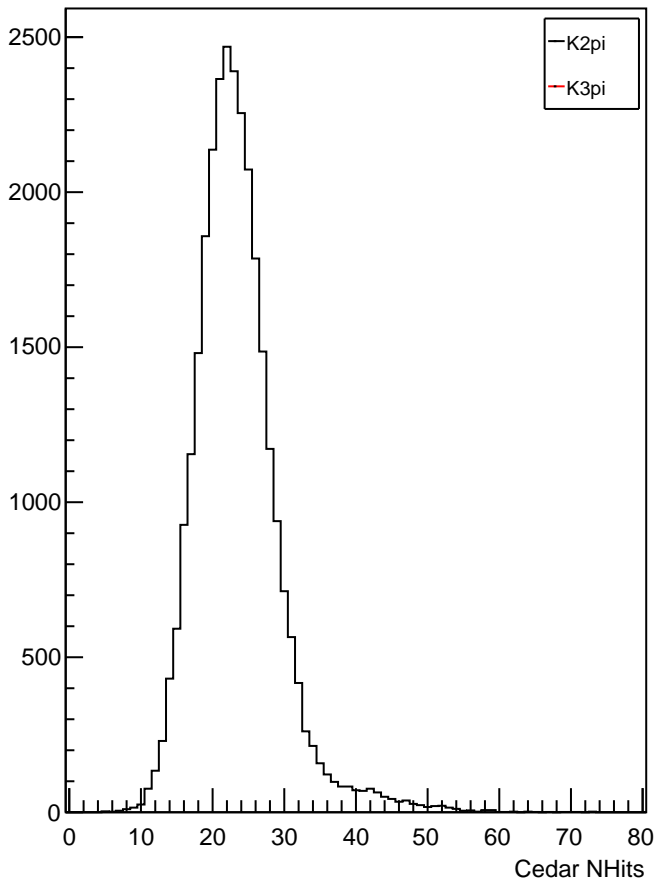
Cedar Efficiency (K2pi selection) vs BurstID for run 8094



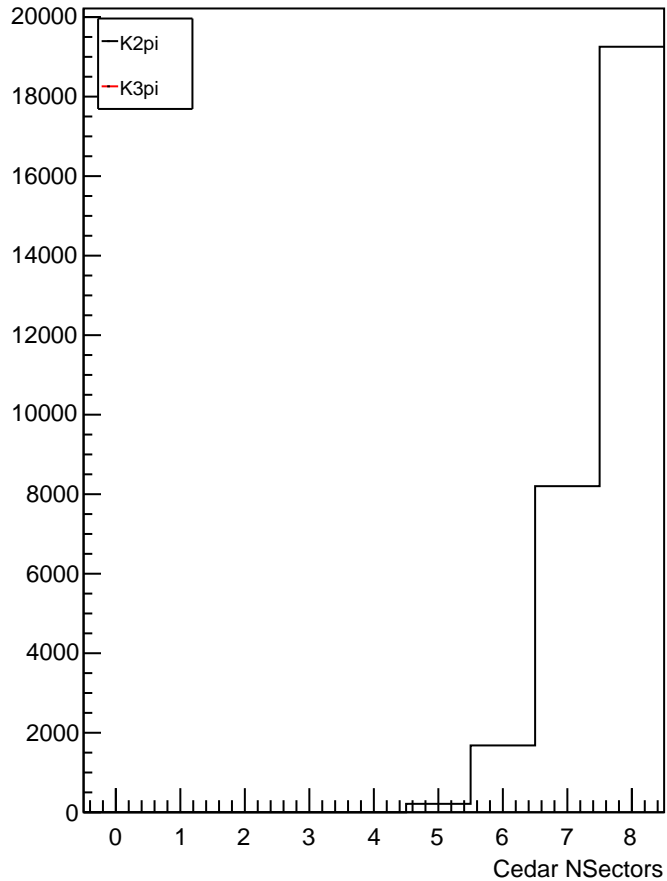
Cedar Efficiency (K3pi selection) vs BurstID for run 8094



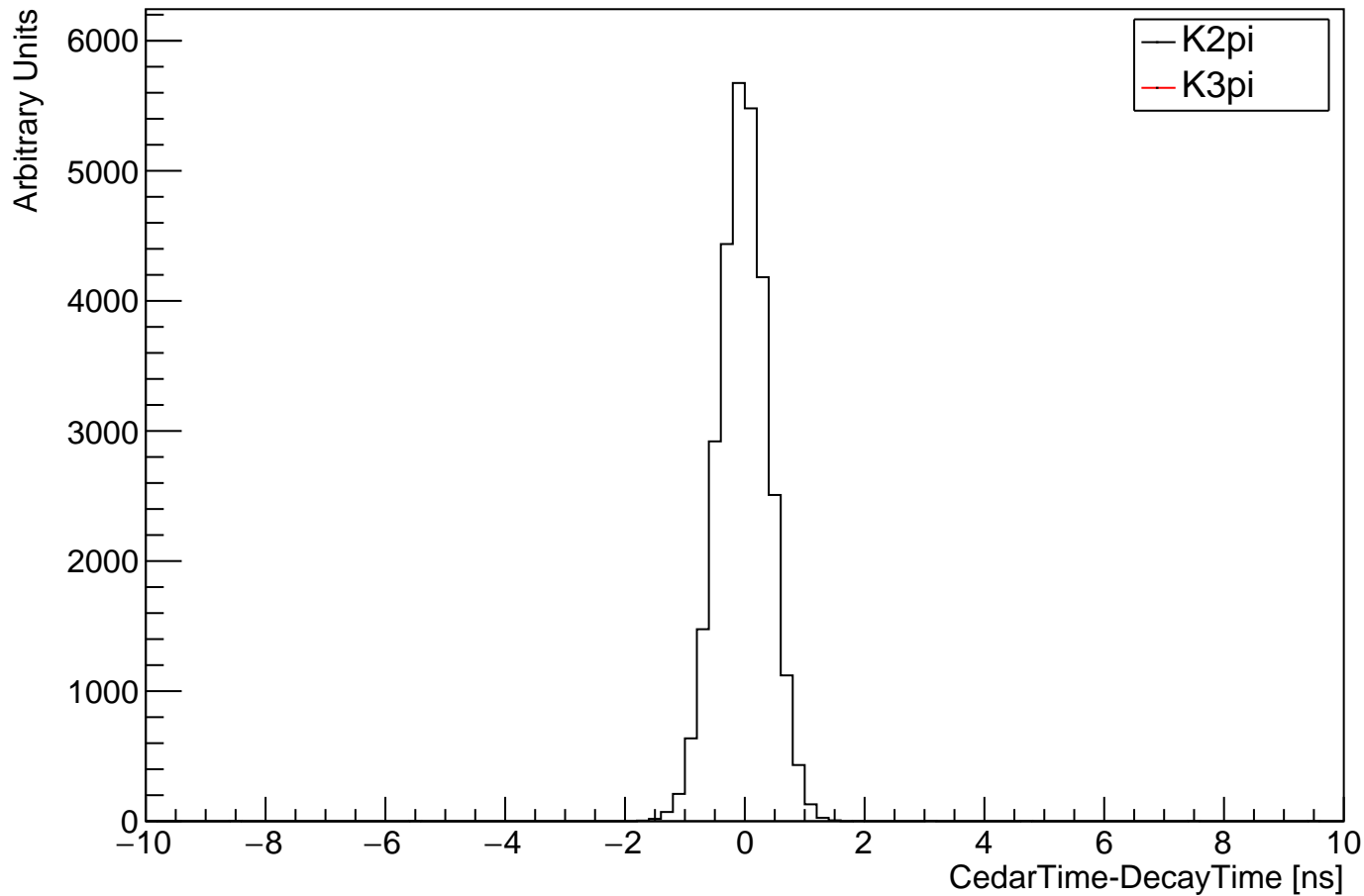
Cedar NHits distribution for run 8094



Cedar NSectors distribution for run 8094



CedarTime wrt Decay Time for run 8094



CedarTime-DecayTime RMS vs CedarNHits for run 8094

