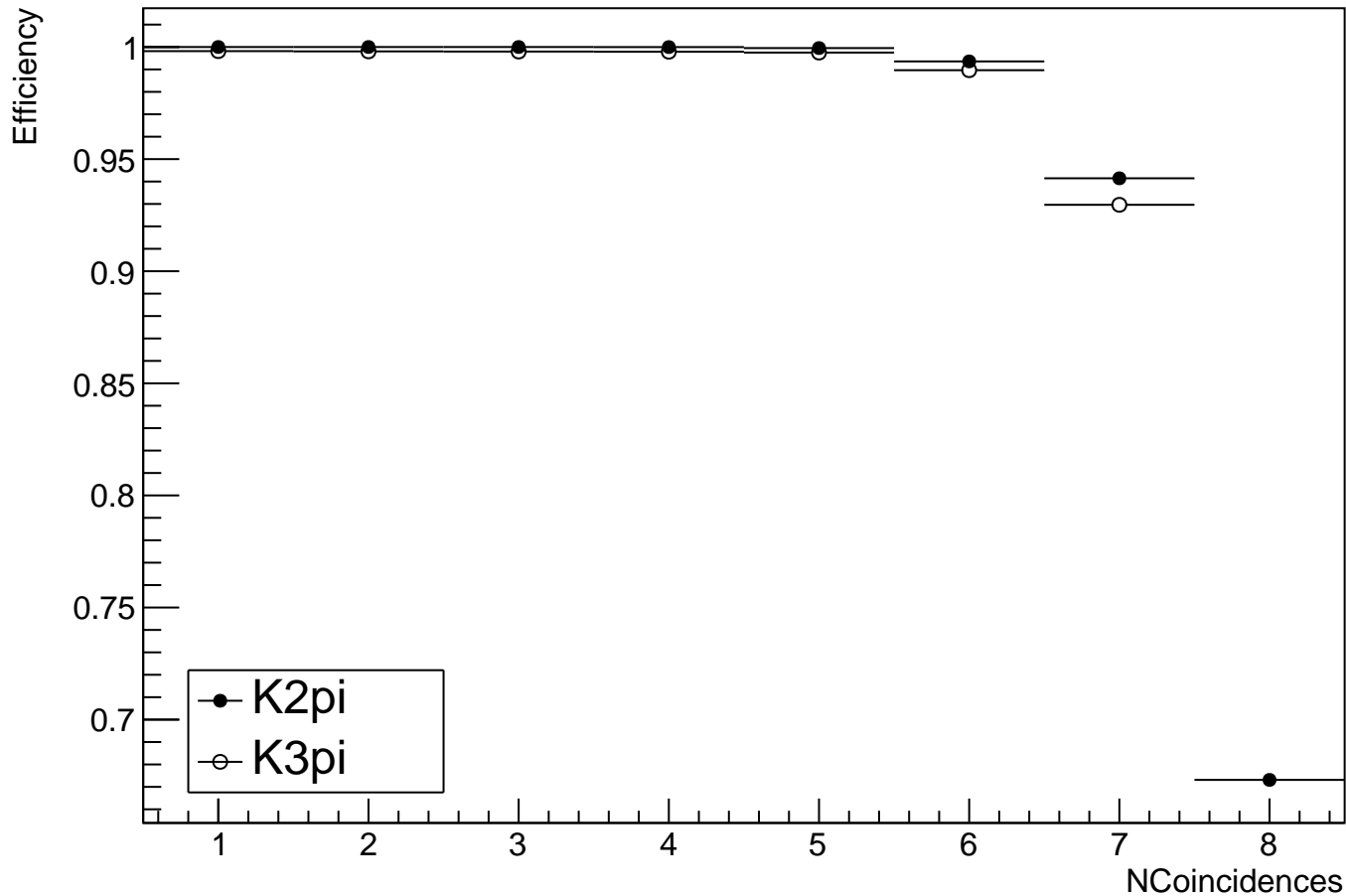
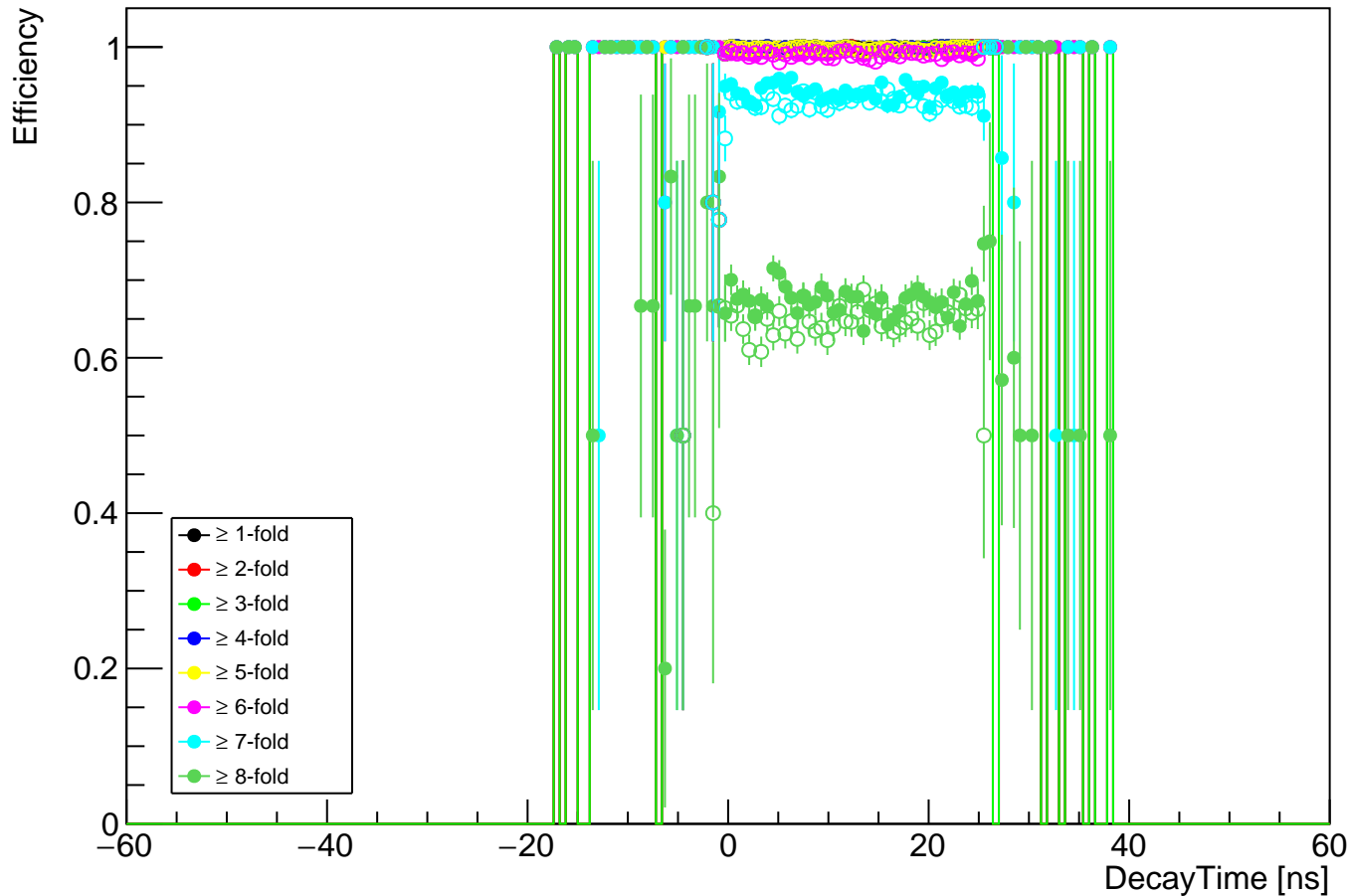


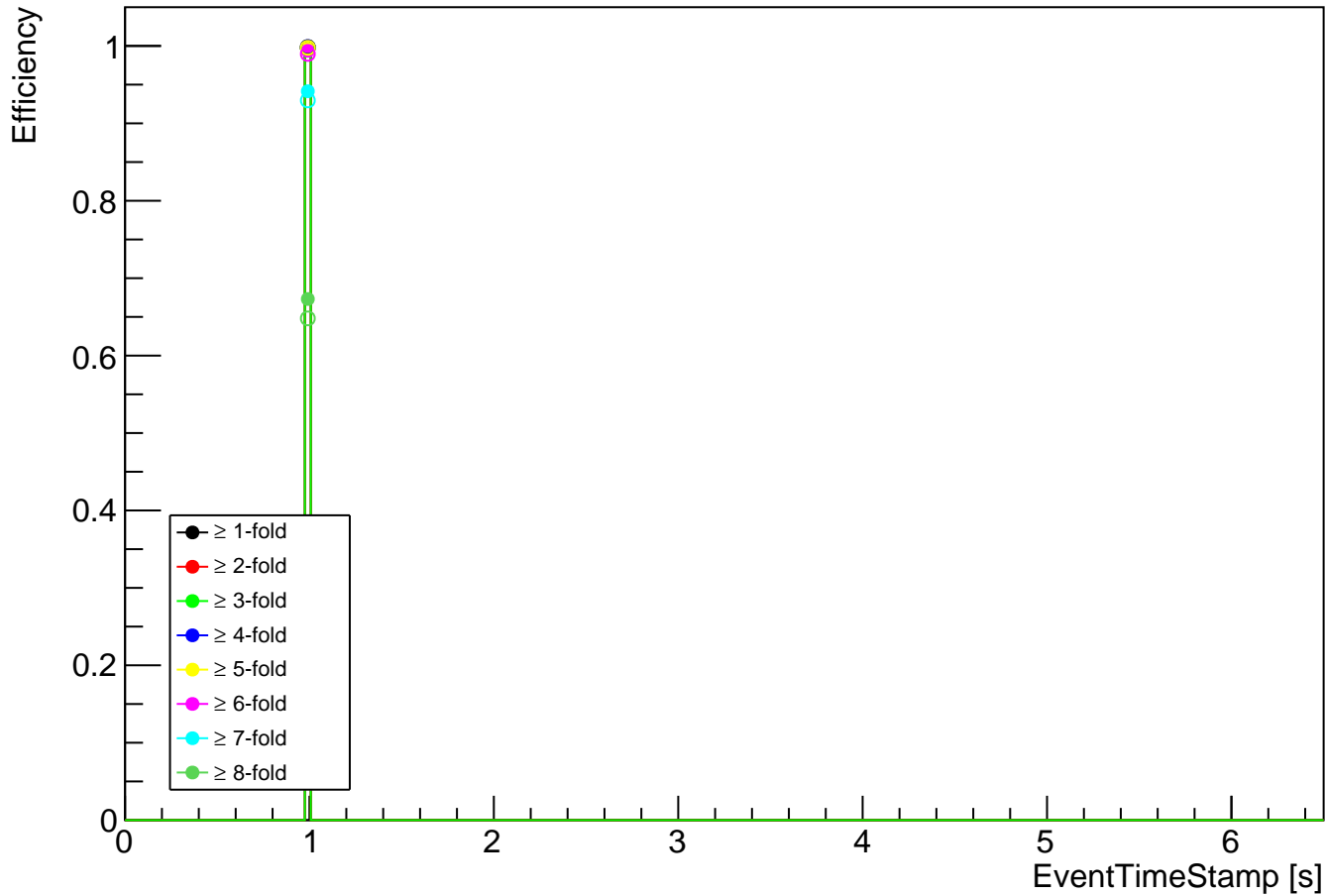
# Cedar Efficiency vs NCoincidences for run 8094



# Cedar Efficiency vs DecayTime for run 8094

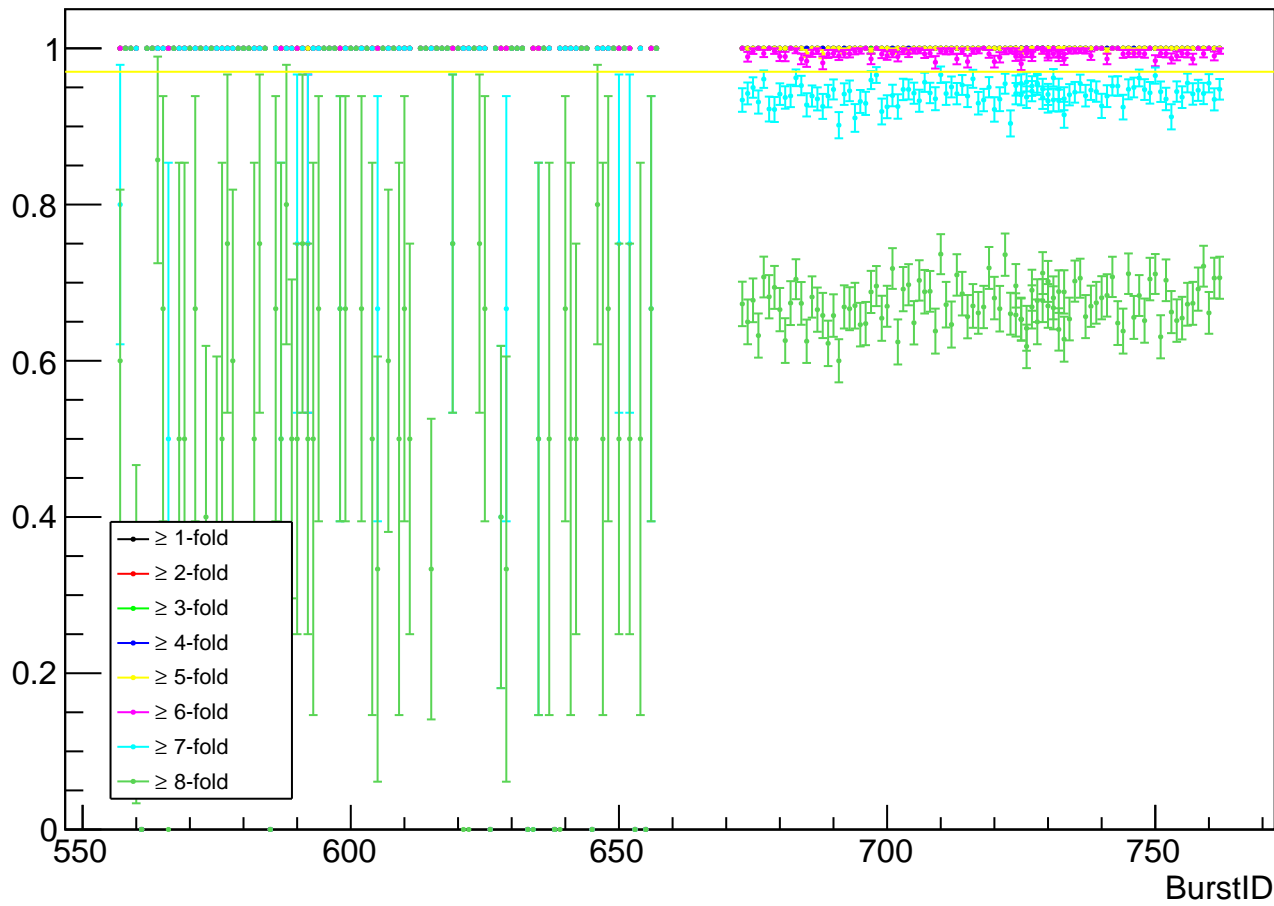


# Cedar Efficiency vs EventTimeStamp for run 8094



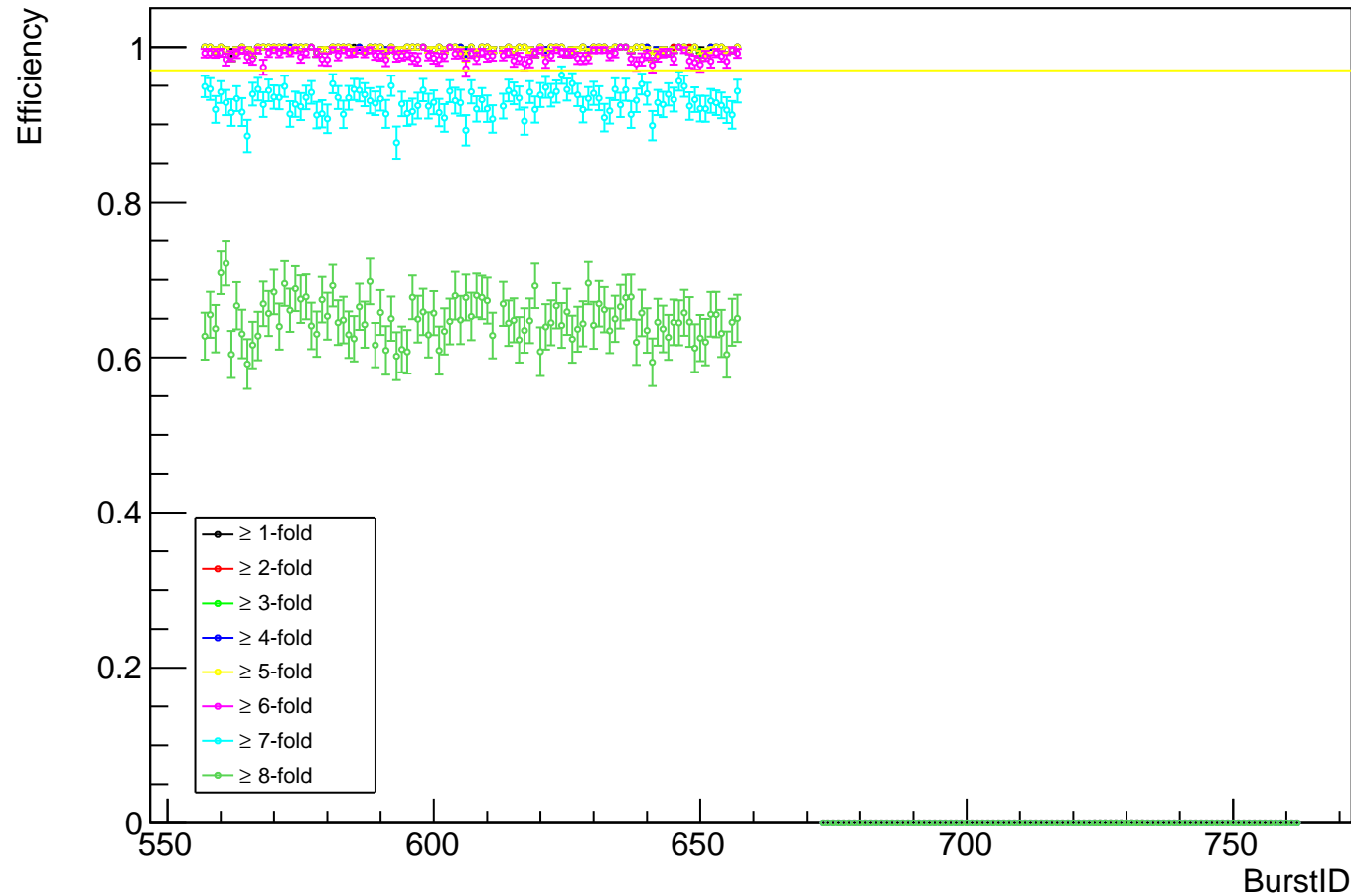
# Cedar Efficiency (K2pi selection) vs BurstID for run 8094

Efficiency



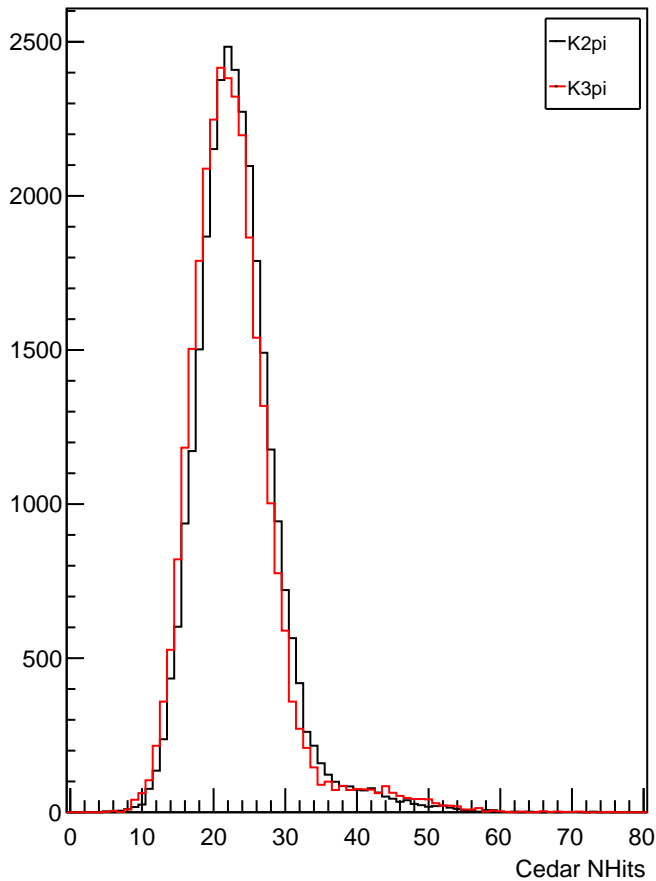


Cedar Efficiency (K3pi selection) vs BurstID for run 8094

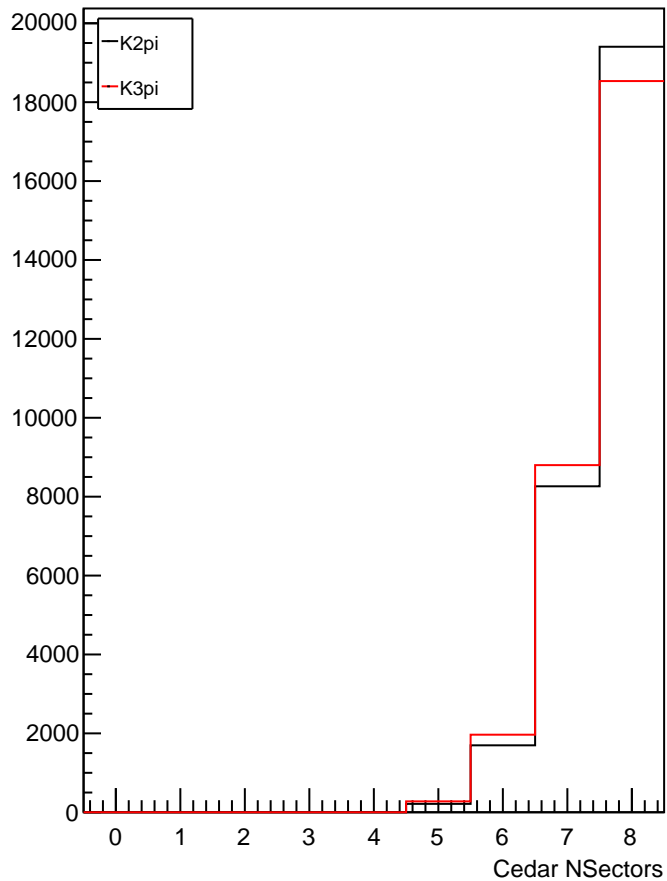




Cedar NHits distribution for run 8094

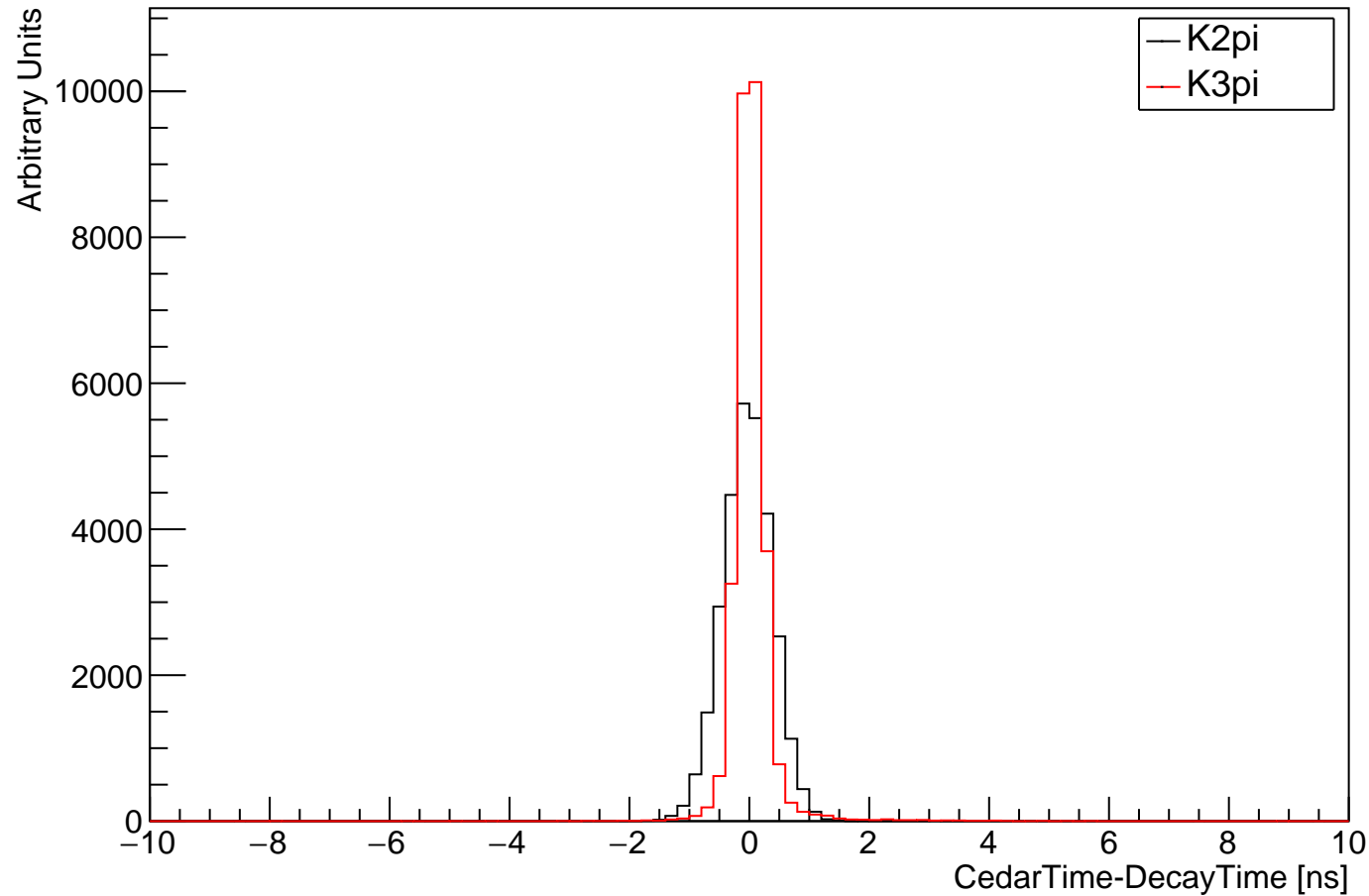


Cedar NSectors distribution for run 8094





# CedarTime wrt Decay Time for run 8094



CedarTime-DecayTime RMS vs CedarNHits for run 8094

