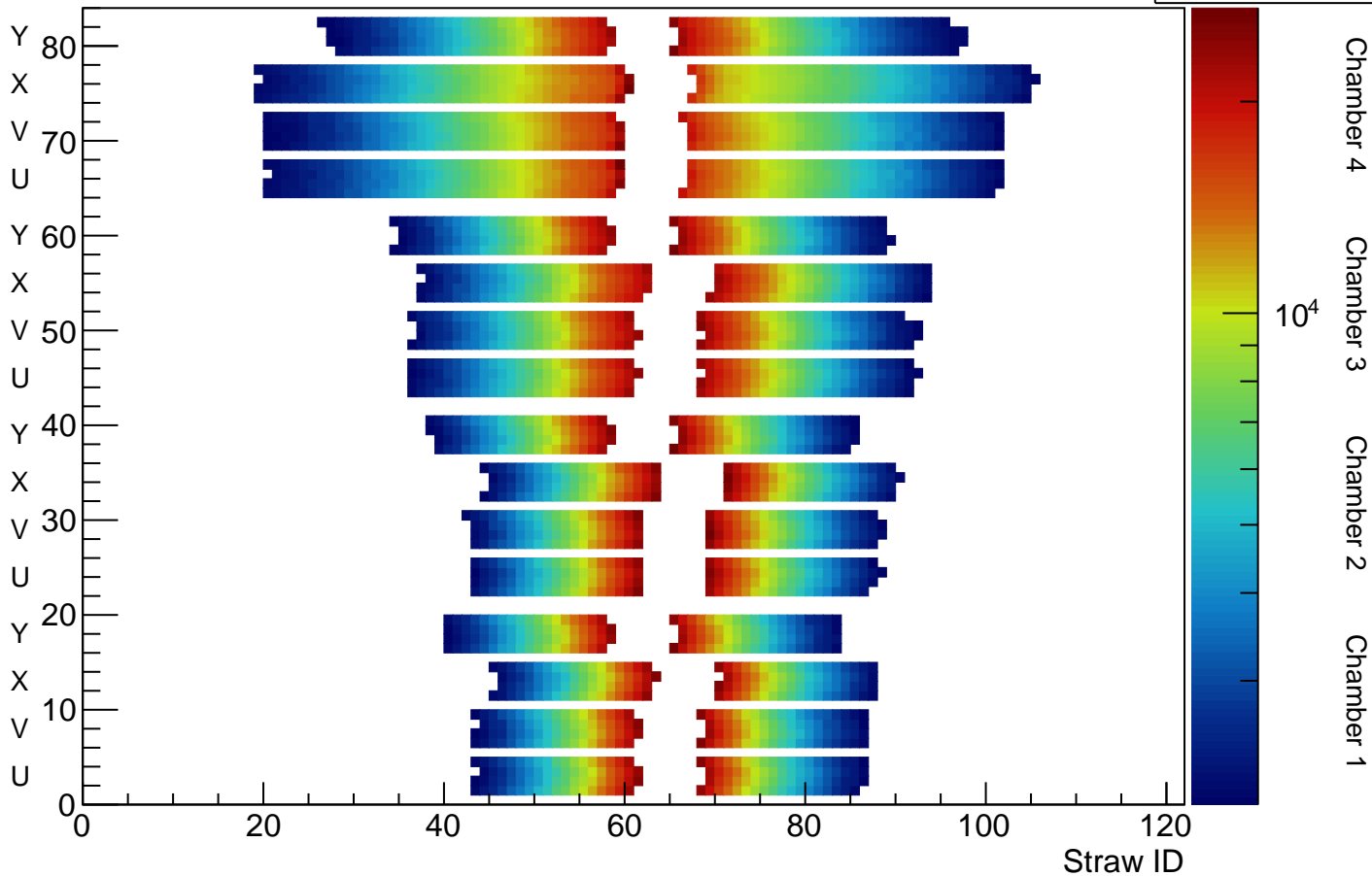


Straw Channel Activity

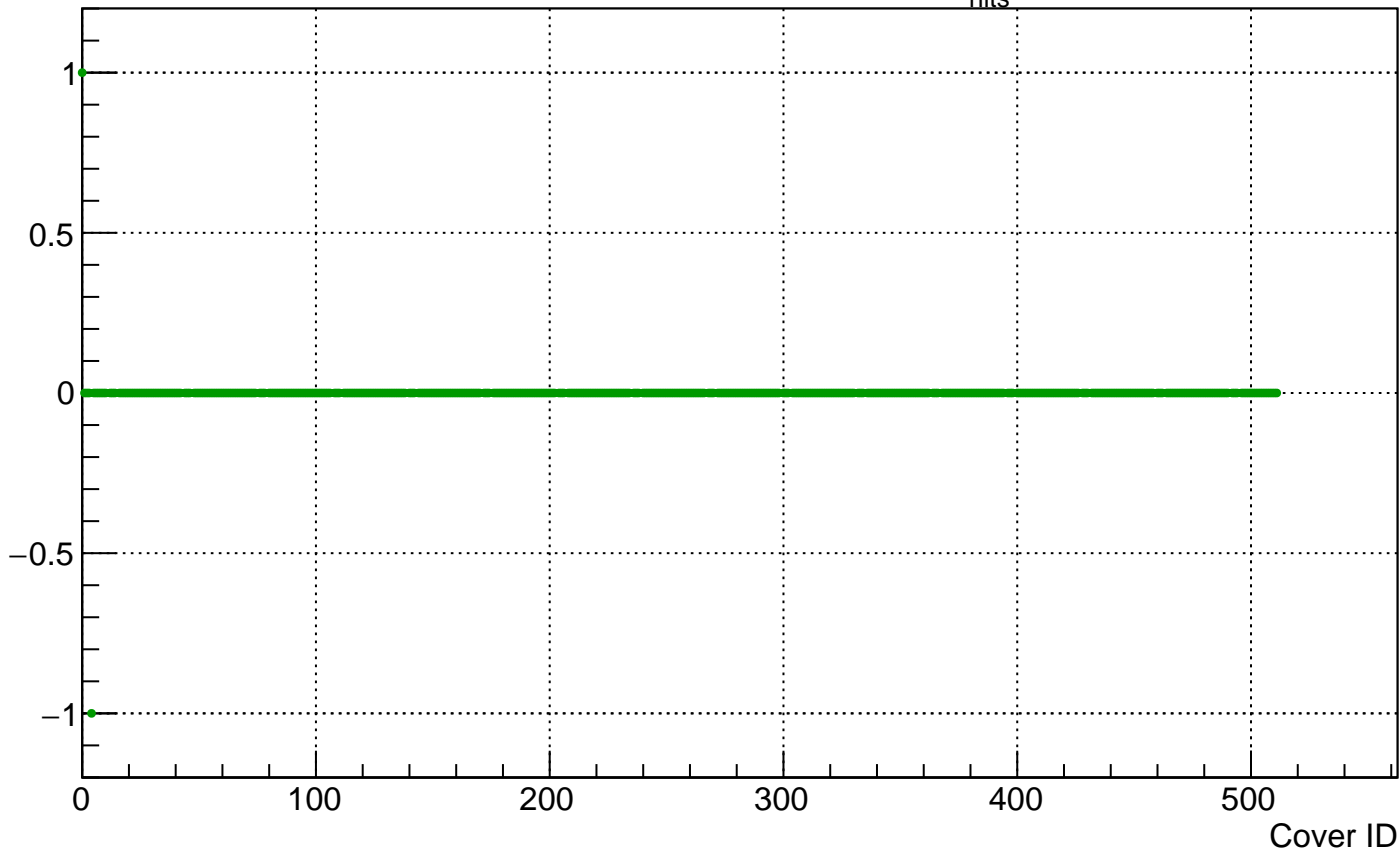
Run 8094

Entries 2.898232e+07

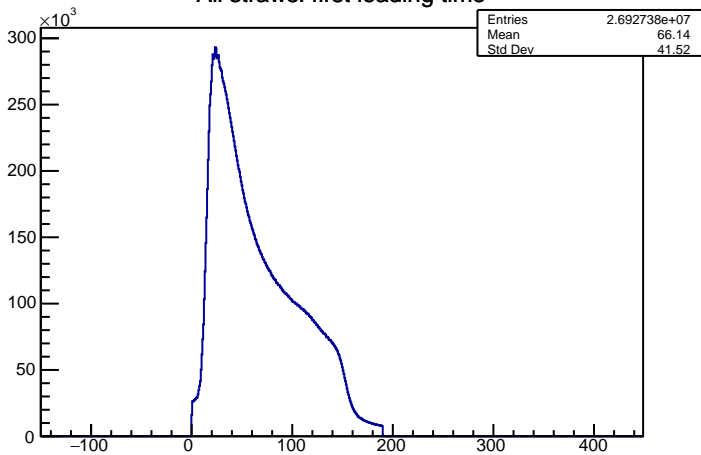


$$\text{Cover asymmetry: } A(\text{cover}) = \frac{N_{\text{hits}}(\text{cover}) - N_{\text{hits}}(\text{neighbor})}{N_{\text{hits}}(\text{cover}) + N_{\text{hits}}(\text{neighbor})}$$

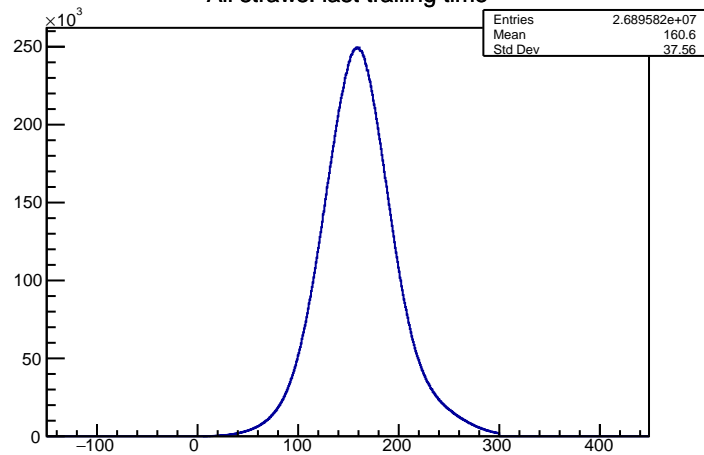
A



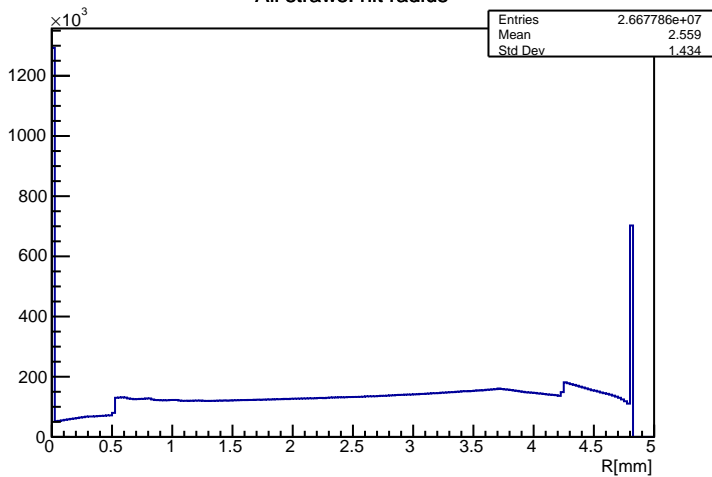
All straws: first leading time



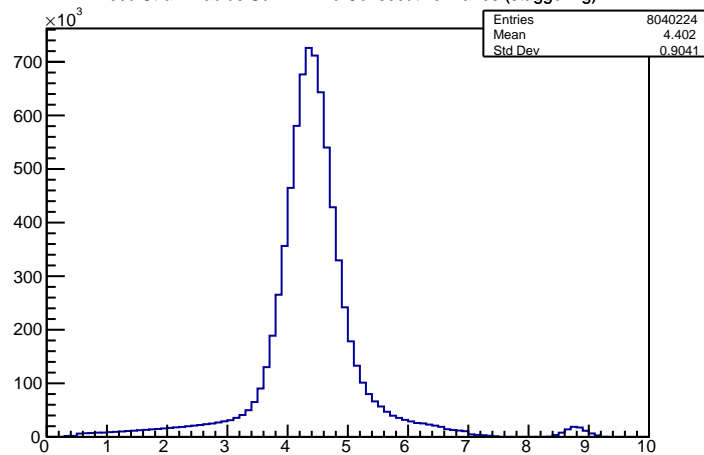
All straws: last trailing time



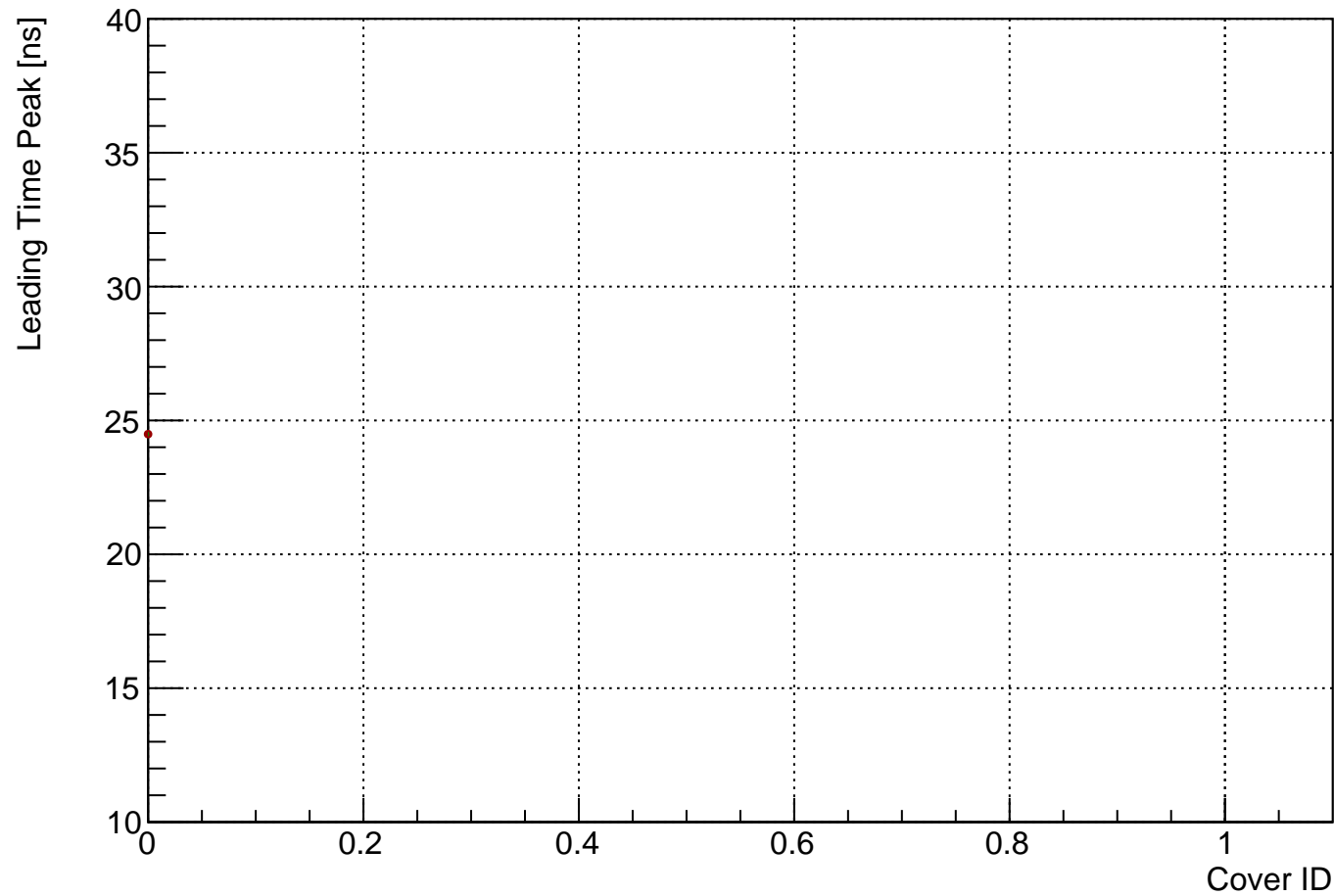
All straws: hit radius



Reco Straw Radius Sum in Two Consecutive Planes (staggering)

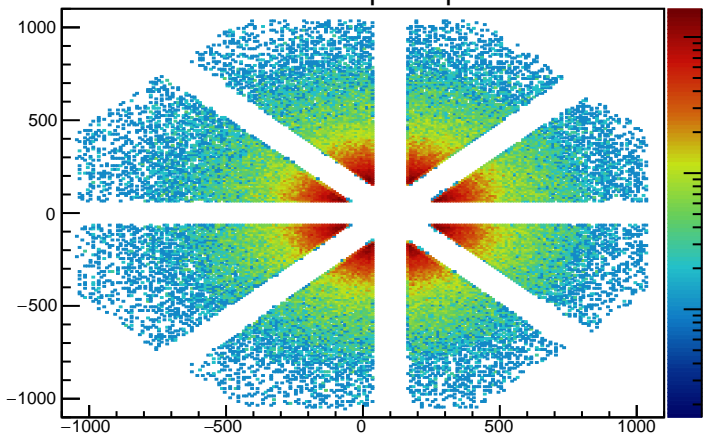


Leading Time Peak Position vs. Cover ID

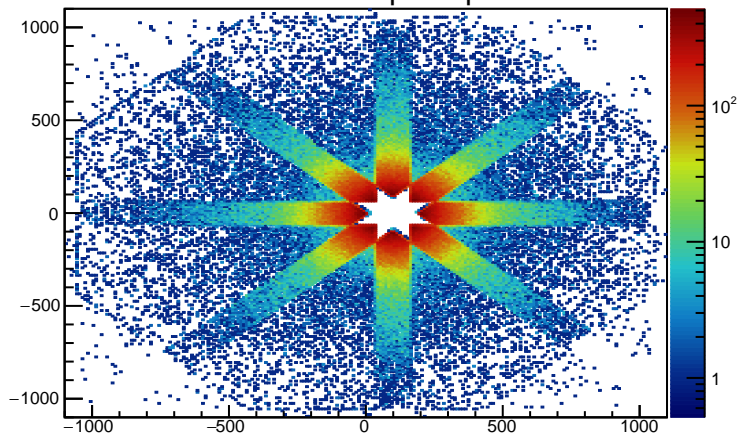


Chamber 1

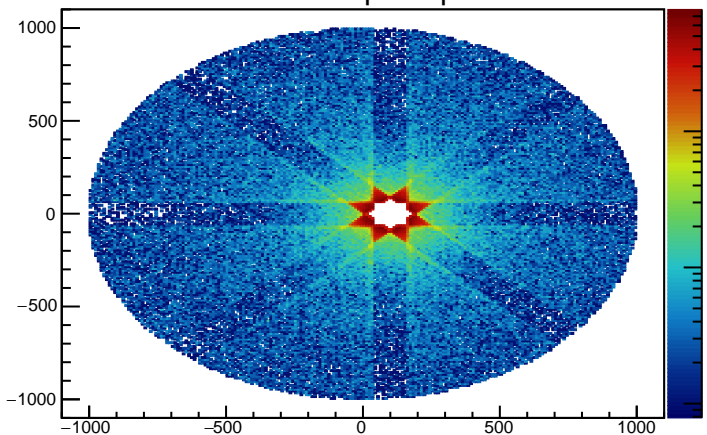
Four-view space-points



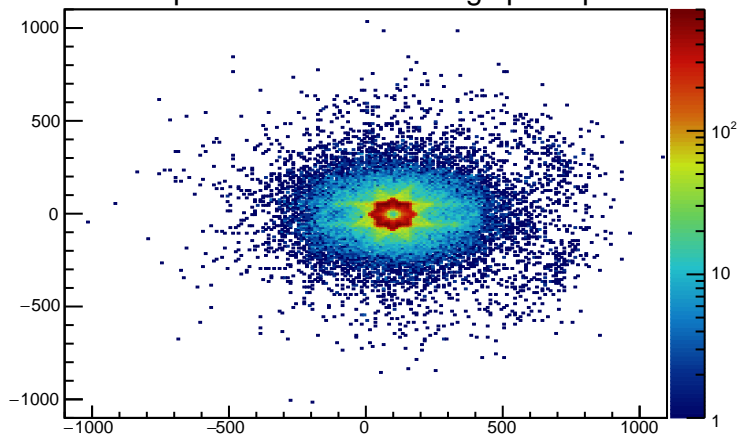
Three-view space-points



Two-view space-points

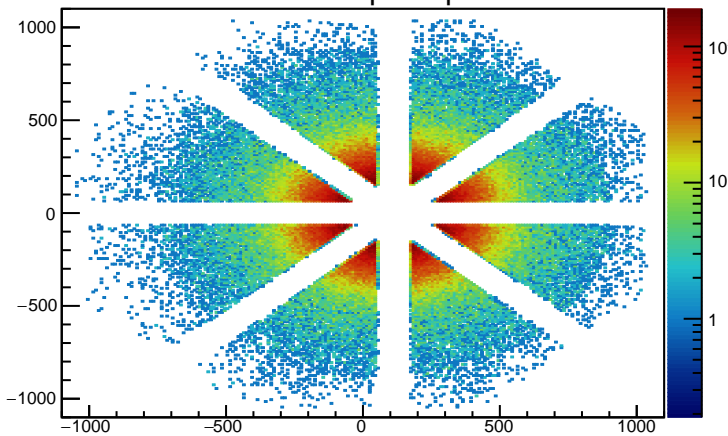


Extrapolated tracks: missing space-points

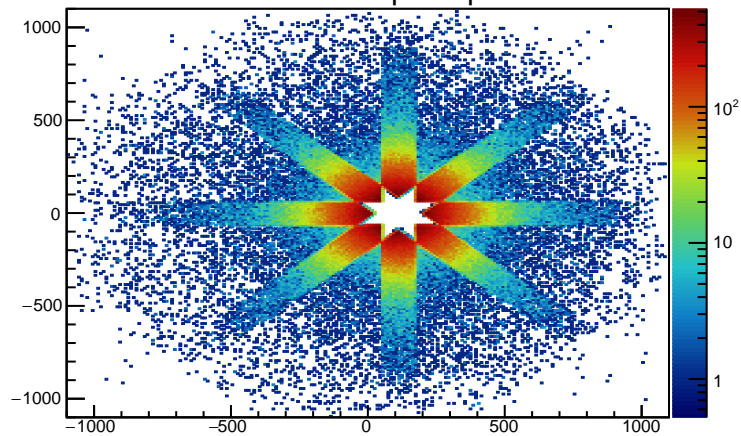


Chamber 2

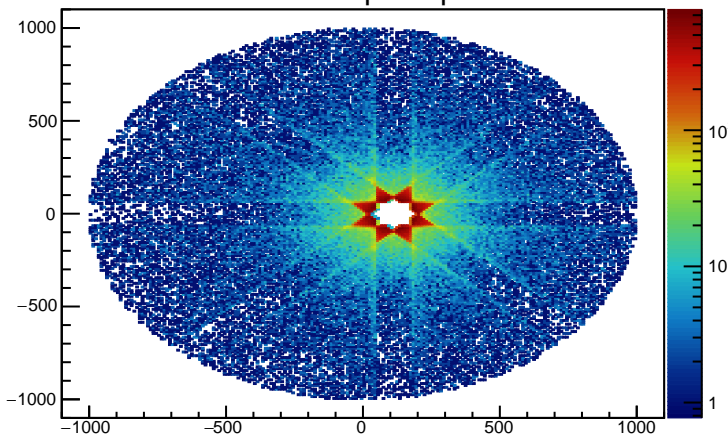
Four-view space-points



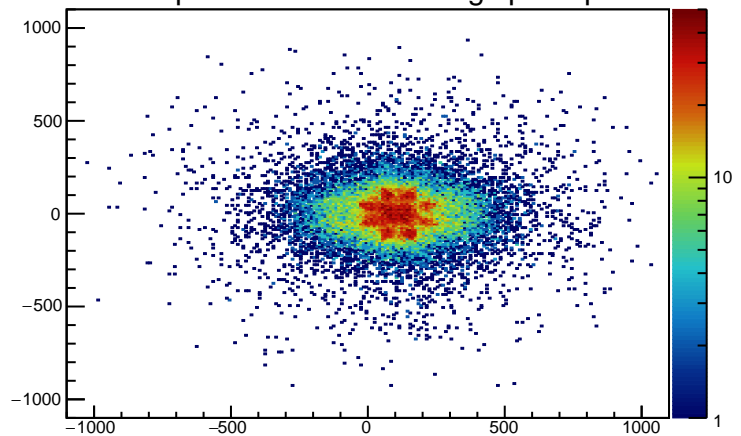
Three-view space-points



Two-view space-points

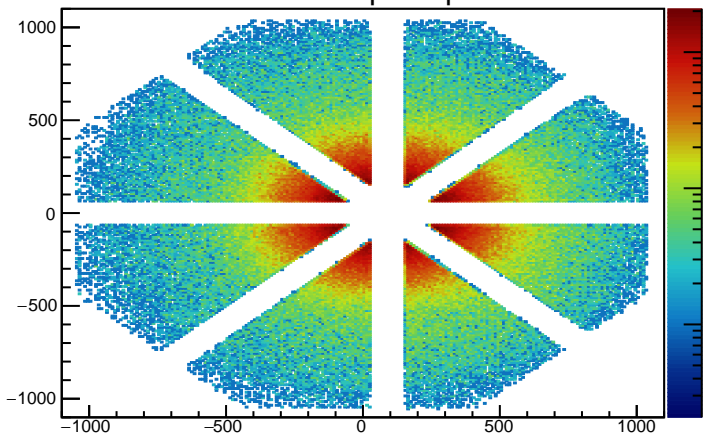


Extrapolated tracks: missing space-points

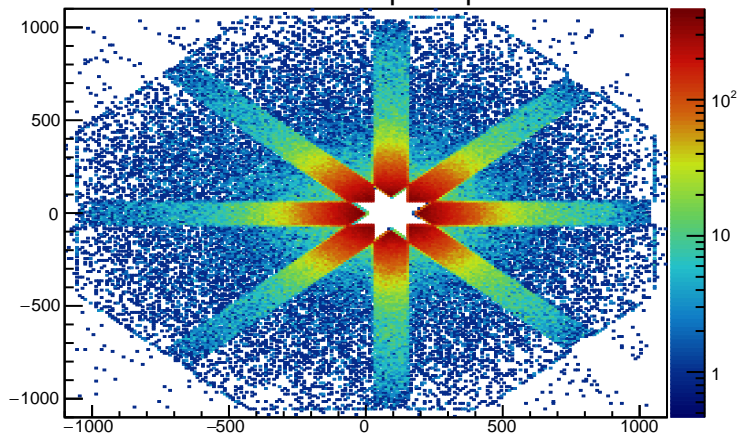


Chamber 3

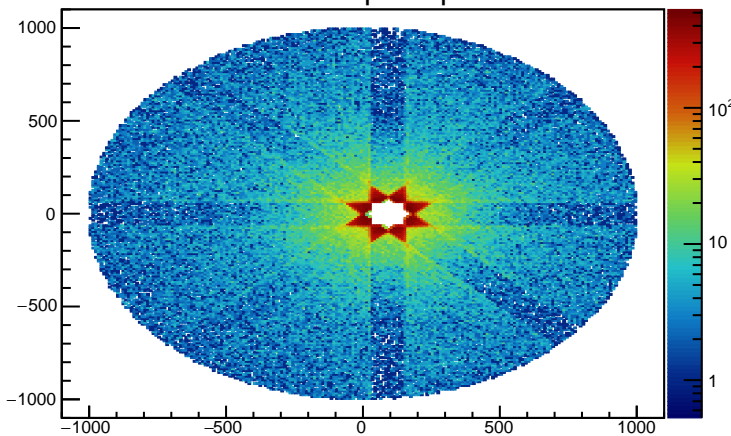
Four-view space-points



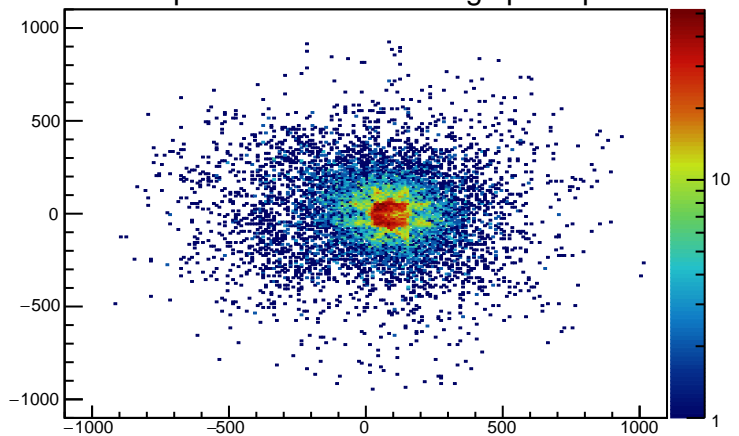
Three-view space-points



Two-view space-points

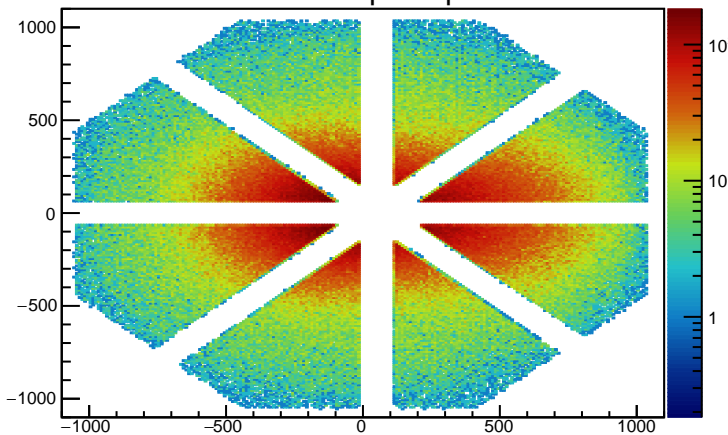


Extrapolated tracks: missing space-points

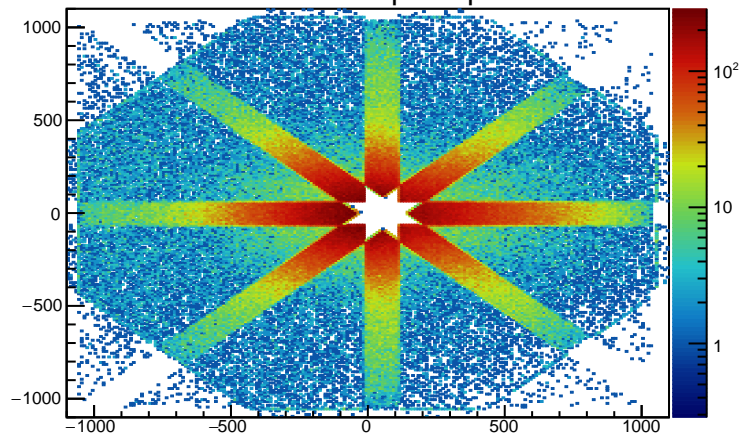


Chamber 4

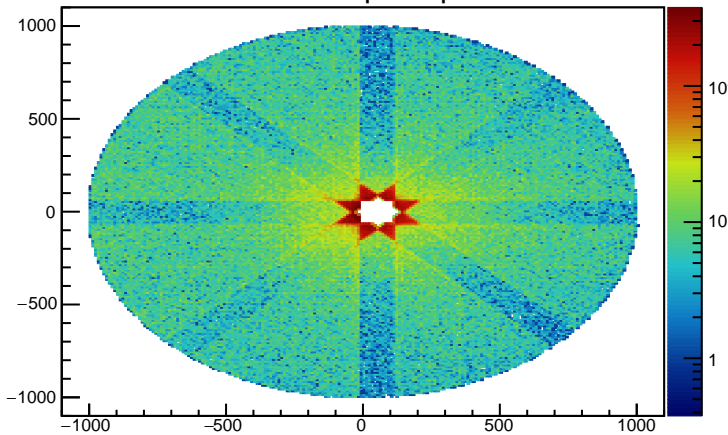
Four-view space-points



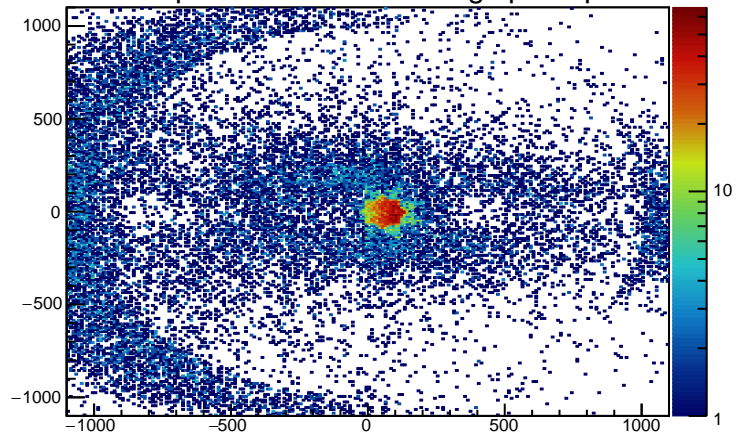
Three-view space-points



Two-view space-points



Extrapolated tracks: missing space-points



Geometric straw alignment: hit-track residual mean value (gaus fit)

