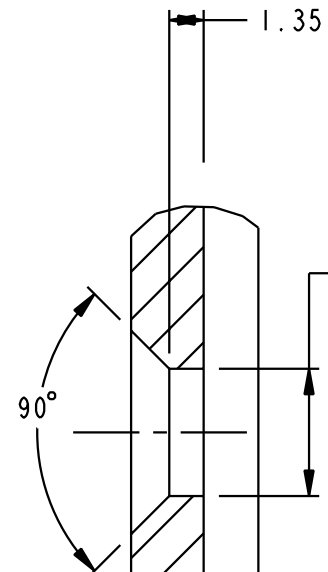
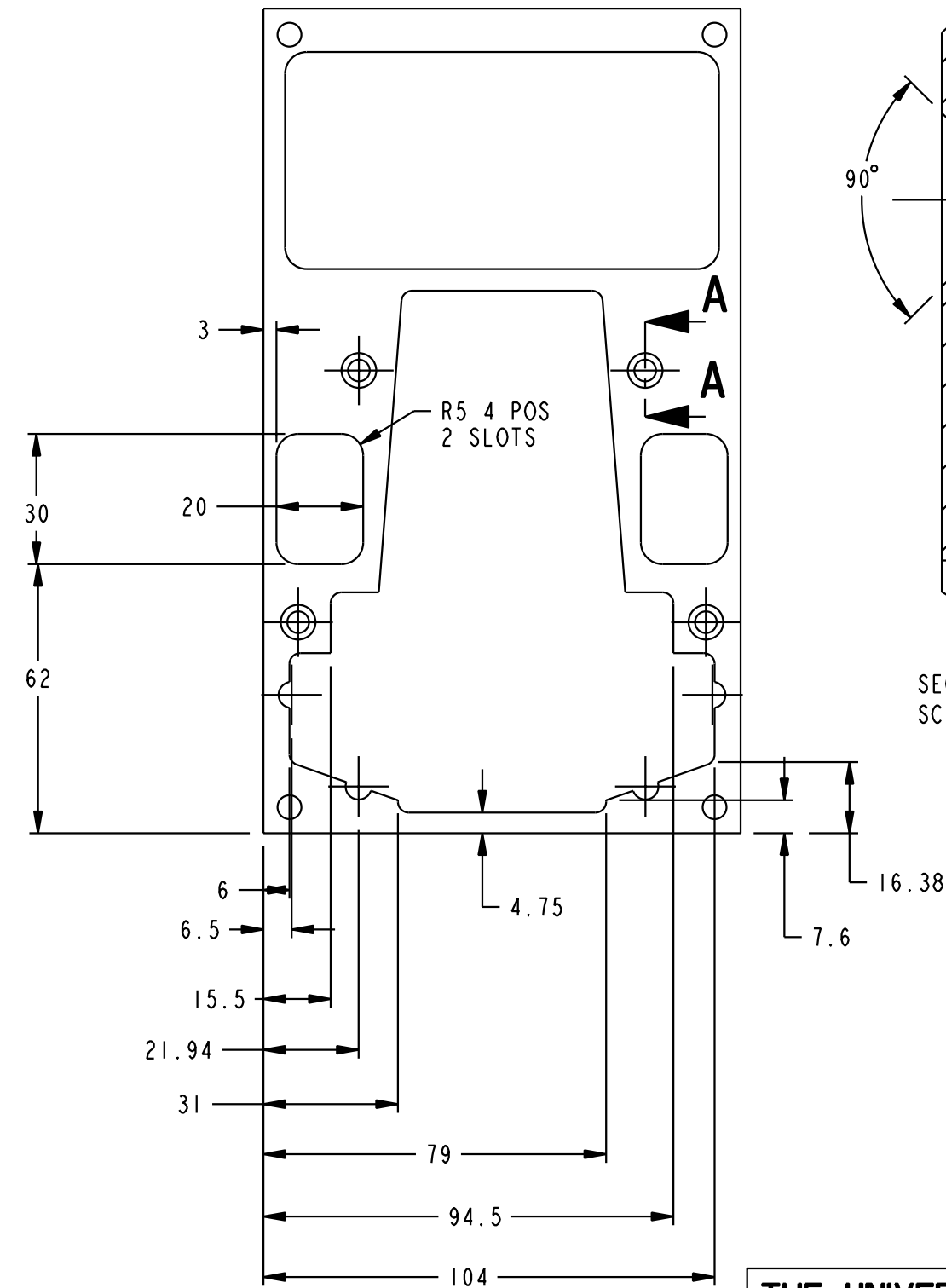
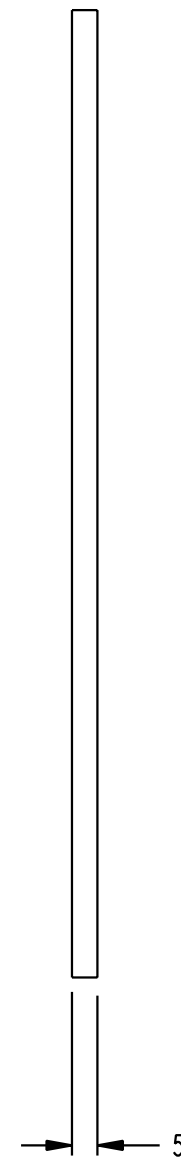


2.15 DEEP

2.75 DEEP
THESE SURFACES TO BE
CO-PLANNER TO WITHIN ±0.025
OF EACH OTHER



SECTION A-A
SCALE 5:1

A	18-04-02	P.SUTCLIFFE	FIRST ISSUE
ISSUE	DATE	NAME	DESCRIPTION
MODIFICATIONS			

UNLESS OTHERWISE SPECIFIED:- ALL DIMENSIONS IN MILLIMETRES SURFACE TEXTURE VALUES IN MICROMETRES SURFACE TEXTURE TO BE 3.2 ✓ MACHINE ALL OVER OR WHERE MARKED ✓						METRIC SCREW THREADS TO BS3643 CLASS 6H/6g TOLERANCES UNLESS OTHERWISE SPECIFIED MACHINED DIMS. ± 0.25 ANGULAR ± °		DRAWING PRACTICE AND TOLERANCE INTERPRETATION TO BS308 MATERIAL ACETAL ESD 225 SPEC - TREATMENT - FINISH -		WELDING SYMBOLS TO BS 499 DRAWN P.SUTCLIFFE DATE 18-04-02 CHECKED PS APPROVED PS		THE UNIVERSITY OF LIVERPOOL DEPARTMENT OF PHYSICS PROJECT ATLAS FORWARD TRACKER TITLE INNER MODULE HANDLING FRAME DRAWING NUMBER NP27-04-184 SHEET 1 OF 1 SHEETS SCALE: 1:1			
---	--	--	--	--	--	---	--	--	--	--	--	--	--	--	--